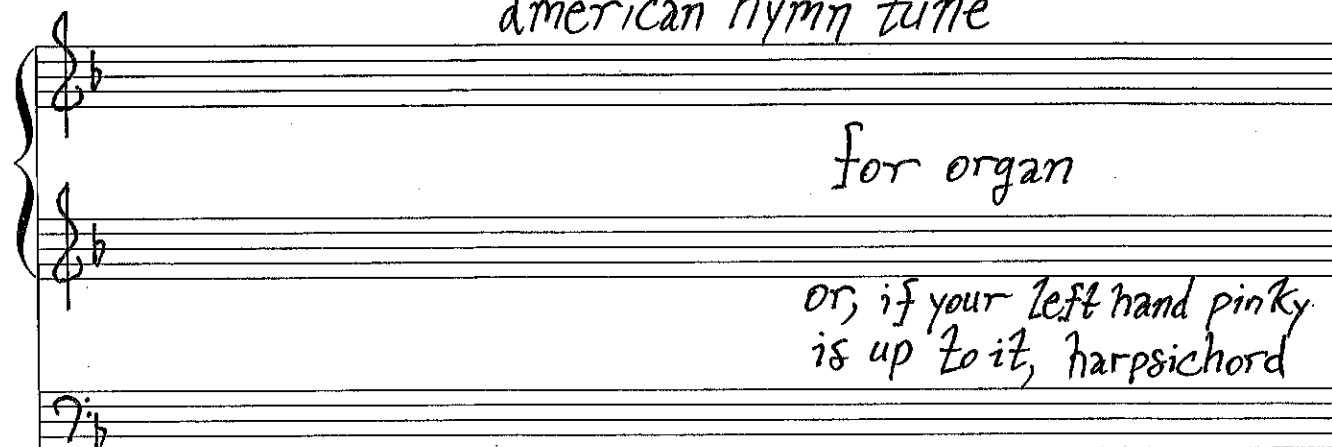


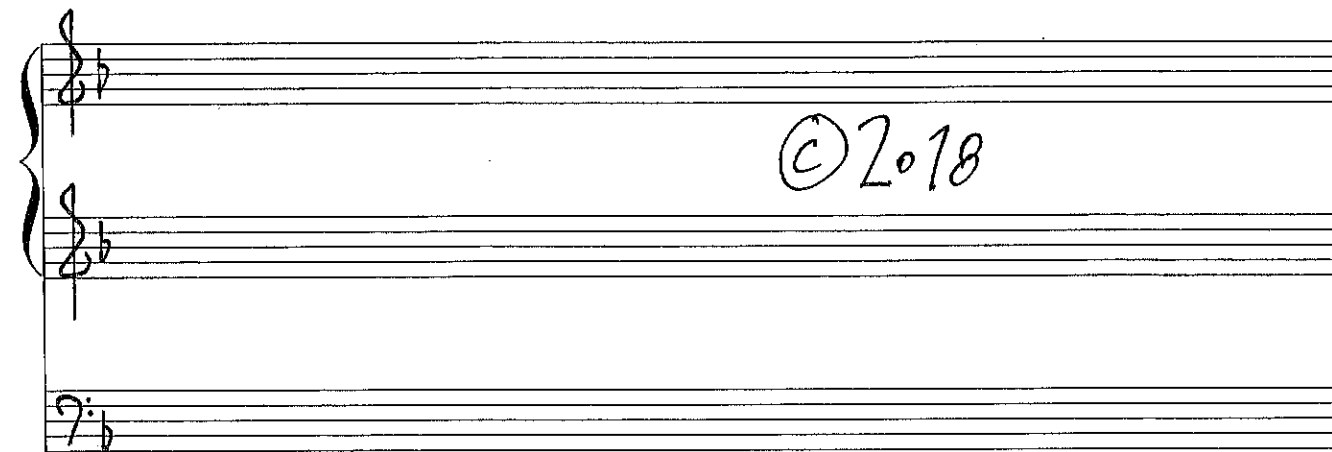
Fughetta and mridanga yati on  
american hymn tune



for organ

or, if your left hand pinky  
is up to it, harpsichord

by Brian Parks



©2018

register clear, not loud

This piece was premiered on  
organ at Sankt Peter Köln  
4 February 2018

and on harpsichord at  
Kunst Halle Düsseldorf  
7 February 2018

recordings available at [brianparks.work](http://brianparks.work)

Manuals

Pedals

3

5

7

Musical notation for measures 7 and 8. The system consists of three staves. The top staff is in treble clef with a key signature of one flat (B-flat). It contains a melodic line with eighth and sixteenth notes. The middle staff is in treble clef with a key signature of one flat, containing a bass line with eighth and sixteenth notes. The bottom staff is in bass clef with a key signature of one flat, containing a bass line with whole notes.

9

Musical notation for measures 9 and 10. The system consists of three staves. The top staff is in treble clef with a key signature of one flat, containing a melodic line with eighth and sixteenth notes. The middle staff is in treble clef with a key signature of one flat, containing a bass line with eighth and sixteenth notes. The bottom staff is in bass clef with a key signature of one flat, containing a bass line with eighth and sixteenth notes.

11

Musical notation for measures 11, 12, and 13. The system consists of three staves. The top staff is in treble clef with a key signature of one flat, containing a melodic line with eighth and sixteenth notes. The middle staff is in treble clef with a key signature of one flat, containing a bass line with eighth and sixteenth notes. The bottom staff is in bass clef with a key signature of one flat, containing a bass line with eighth and sixteenth notes. A circled 'h' is written above the final measure of the system.

13

15

17

19

Handwritten musical notation for measures 19-20. The notation is in a three-staff system (two treble clefs and one bass clef). The key signature is one flat (Bb). The music consists of quarter and eighth notes with stems, and rests. Measure 19 ends with a fermata over a whole note. Measure 20 begins with a key signature change to one sharp (F#) and ends with a fermata over a whole note.

21

Handwritten musical notation for measures 21-22. The notation is in a three-staff system (two treble clefs and one bass clef). The key signature is one sharp (F#). The music consists of quarter and eighth notes with stems, and rests. Measure 21 ends with a fermata over a whole note. Measure 22 begins with a key signature change to one flat (Bb) and ends with a fermata over a whole note.

23

Handwritten musical notation for measures 23-24. The notation is in a three-staff system (two treble clefs and one bass clef). The key signature is one flat (Bb). The music consists of quarter and eighth notes with stems, and rests. Measure 23 ends with a fermata over a whole note. Measure 24 begins with a key signature change to one sharp (F#) and ends with a fermata over a whole note.

25

Handwritten musical notation for measures 25-26. The notation is on three staves (two treble clefs and one bass clef). The music is in 2/4 time. Measure 25 contains a sequence of eighth and quarter notes. Measure 26 features a key signature change to one sharp, indicated by a double bar line and a sharp sign above the staff.

27

Handwritten musical notation for measures 27-28. The notation is on three staves (two treble clefs and one bass clef). The music is in 2/4 time. Measure 27 contains a sequence of eighth and quarter notes. Measure 28 continues the sequence with similar note values.

29

Handwritten musical notation for measures 29-30. The notation is on three staves (two treble clefs and one bass clef). The music is in 2/4 time. Measure 29 contains a sequence of eighth and quarter notes. Measure 30 features a key signature change to one sharp, indicated by a double bar line and a sharp sign above the staff.

31

Handwritten musical score for measures 31-33. The score is written on three staves: two grand staves (treble and bass clefs) and one bass staff. The key signature is one flat (B-flat). Measure 31 starts with a treble clef and a key signature change to one flat. The music consists of eighth and sixteenth notes with rests. Measure 32 continues the pattern. Measure 33 ends with a double bar line and a sharp sign above the staff.

34

Handwritten musical score for measures 34-36. The score is written on three staves: two grand staves (treble and bass clefs) and one bass staff. The key signature is one flat (B-flat). Measure 34 starts with a treble clef and a key signature change to one flat. The music consists of eighth and sixteenth notes with rests. Measure 35 continues the pattern. Measure 36 ends with a double bar line and a key signature change to one sharp (F#).

37

Handwritten musical score for measures 37-39. The score is written on three staves: two grand staves (treble and bass clefs) and one bass staff. The key signature is one sharp (F#). Measure 37 starts with a treble clef and a key signature change to one sharp. The music consists of eighth and sixteenth notes with rests. Measure 38 continues the pattern. Measure 39 ends with a double bar line and a key signature change to one flat (B-flat).



40

Handwritten musical score for measures 40-42. The score is written on three staves: two grand staves (treble and bass clef) and one bass staff. The music is in 3/4 time with a key signature of one flat. Measure 40 starts with a treble clef and a key signature change to one flat. Measure 42 ends with a double bar line and a key signature change to one sharp.

43

Handwritten musical score for measures 43-45. The score is written on three staves: two grand staves (treble and bass clef) and one bass staff. The music is in 3/4 time with a key signature of one flat. Measure 45 ends with a double bar line.

46

Handwritten musical score for measures 46-48. The score is written on three staves: two grand staves (treble and bass clef) and one bass staff. The music is in 3/4 time with a key signature of one sharp. Measure 46 starts with a treble clef and a key signature change to one sharp. Measure 48 ends with a double bar line.

49

52

55

58

61

64

67

Handwritten musical notation for measures 67-69. The system consists of three staves: two grand staves (treble and bass clefs) and one bass staff (bass clef). The key signature has one flat (B-flat). The time signature is 6/8. Measure 67: Treble clef has a whole rest, a quarter note G4, a quarter note F4, and a half note E4. Bass clef has a whole rest, a quarter note G3, a quarter note F3, and a half note E3. Bass staff has a whole rest, a quarter note G2, a quarter note F2, and a half note E2. Measure 68: Treble clef has a quarter note G4, a quarter note F4, a quarter note E4, and a half rest. Bass clef has a quarter note G3, a quarter note F3, a quarter note E3, and a half rest. Bass staff has a quarter note G2, a quarter note F2, a quarter note E2, and a half rest. Measure 69: Treble clef has a quarter note G4, a quarter note F4, a quarter note E4, and a half note D4. Bass clef has a quarter note G3, a quarter note F3, a quarter note E3, and a half note D3. Bass staff has a quarter note G2, a quarter note F2, a quarter note E2, and a half note D2. A fermata is placed over the final note of each staff in measure 69.

70

Handwritten musical notation for measures 70-72. The system consists of three staves: two grand staves (treble and bass clefs) and one bass staff (bass clef). The key signature has one flat (B-flat). The time signature is 6/8. Measure 70: Treble clef has a quarter note G4, a quarter note F4, a quarter note E4, and a half rest. Bass clef has a quarter note G3, a quarter note F3, a quarter note E3, and a half rest. Bass staff has a quarter note G2, a quarter note F2, a quarter note E2, and a half rest. Measure 71: Treble clef has a quarter note G4, a quarter note F4, a quarter note E4, and a half note D4. Bass clef has a quarter note G3, a quarter note F3, a quarter note E3, and a half note D3. Bass staff has a quarter note G2, a quarter note F2, a quarter note E2, and a half note D2. Measure 72: Treble clef has a quarter note G4, a quarter note F4, a quarter note E4, and a half note D4. Bass clef has a quarter note G3, a quarter note F3, a quarter note E3, and a half note D3. Bass staff has a quarter note G2, a quarter note F2, a quarter note E2, and a half note D2. A fermata is placed over the final note of each staff in measure 72.

73

Handwritten musical notation for measures 73-75. The system consists of three staves: two grand staves (treble and bass clefs) and one bass staff (bass clef). The key signature has one flat (B-flat). The time signature is 6/8. Measure 73: Treble clef has a quarter note G4, a quarter note F4, a quarter note E4, and a half rest. Bass clef has a quarter note G3, a quarter note F3, a quarter note E3, and a half rest. Bass staff has a quarter note G2, a quarter note F2, a quarter note E2, and a half rest. Measure 74: Treble clef has a quarter note G4, a quarter note F4, a quarter note E4, and a half note D4. Bass clef has a quarter note G3, a quarter note F3, a quarter note E3, and a half note D3. Bass staff has a quarter note G2, a quarter note F2, a quarter note E2, and a half note D2. Measure 75: Treble clef has a quarter note G4, a quarter note F4, a quarter note E4, and a half note D4. Bass clef has a quarter note G3, a quarter note F3, a quarter note E3, and a half note D3. Bass staff has a quarter note G2, a quarter note F2, a quarter note E2, and a half note D2. A fermata is placed over the final note of each staff in measure 75.

76

79

82

85

88

91

94

Handwritten musical notation for measures 94-96. It consists of three staves: two grand staves (treble and bass clef) and one bass staff. The music is in 6/8 time and features a sequence of chords and eighth notes. A key signature change to one flat is indicated above the third measure of the top staff.

97

Handwritten musical notation for measures 97-99. It consists of three staves: two grand staves (treble and bass clef) and one bass staff. The music continues with chords and eighth notes in 6/8 time.

100

Handwritten musical notation for measures 100-103. It consists of three staves: two grand staves (treble and bass clef) and one bass staff. The music continues with chords and eighth notes in 6/8 time. A key signature change to one flat is indicated above the second measure of the top staff.

104

108

112



116

Handwritten musical score for measures 116-119. The score is written on three staves: two grand staves (treble and bass clef) and one bass staff. The music is in 6/8 time and features a simple rhythmic pattern of quarter notes and rests.

120

Handwritten musical score for measures 120-123. The score is written on three staves: two grand staves (treble and bass clef) and one bass staff. The music is in 6/8 time and features a simple rhythmic pattern of quarter notes and rests.

124

Handwritten musical score for measures 124-127. The score is written on three staves: two grand staves (treble and bass clef) and one bass staff. The music is in 6/8 time and features a simple rhythmic pattern of quarter notes and rests.

128

Handwritten musical notation for measures 128-131. The notation is on three staves: a grand staff with two treble clefs and a bass clef. The music is in 3/8 time. The first measure has a key signature of one flat. The second measure has a key signature change to one flat. The rhythm consists of quarter notes and rests.

132

Handwritten musical notation for measures 132-135. The notation is on three staves: a grand staff with two treble clefs and a bass clef. The music is in 3/8 time. The first measure has a key signature of one flat. The fourth measure has a key signature change to one flat. The rhythm consists of quarter notes and rests.

136

Handwritten musical notation for measures 136-139. The notation is on three staves: a grand staff with two treble clefs and a bass clef. The music is in 3/8 time. The first measure has a key signature of one flat. The fourth measure has a key signature change to one flat. The rhythm consists of quarter notes and rests.

140

Handwritten musical score for measures 140-143. It consists of three staves: two grand staves (treble and bass clef) and one bass staff. The music is in 6/8 time and B-flat major. Measure 140 starts with a treble clef and a key signature of one flat. The notation includes quarter notes, eighth notes, and rests. A dynamic marking 'f' is present above the first measure of the grand staff. The bass staff continues the harmonic accompaniment with similar rhythmic patterns.

144

Handwritten musical score for measures 144-147. It consists of three staves: two grand staves (treble and bass clef) and one bass staff. The music is in 6/8 time and B-flat major. Measure 144 starts with a treble clef and a key signature of one flat. The notation includes quarter notes, eighth notes, and rests. A dynamic marking 'f' is present above the first measure of the grand staff. The bass staff continues the harmonic accompaniment with similar rhythmic patterns.

148

Handwritten musical score for measures 148-151. It consists of three staves: two grand staves (treble and bass clef) and one bass staff. The music is in 6/8 time and B-flat major. Measure 148 starts with a treble clef and a key signature of one flat. The notation includes quarter notes, eighth notes, and rests. The bass staff continues the harmonic accompaniment with similar rhythmic patterns.

152

Handwritten musical notation for measures 152-155. It consists of three staves: a grand staff (treble and bass clefs) and a separate bass clef staff. The music is in 3/4 time and features a sequence of chords and single notes. A key signature change to one sharp (F#) is indicated above the first staff in the third measure.

156

Handwritten musical notation for measures 156-160. It consists of three staves: a grand staff (treble and bass clefs) and a separate bass clef staff. The music continues with chords and single notes in 3/4 time.

160

Handwritten musical notation for measures 160-163. It consists of three staves: a grand staff (treble and bass clefs) and a separate bass clef staff. A key signature change to one sharp (F#) is indicated above the first staff in the second measure.

164

168

172

176

Handwritten musical score for measures 176-179. The score is written on three staves. The top two staves are a grand staff (treble and bass clef), and the bottom staff is a single bass clef staff. The music is in 3/8 time and features a simple rhythmic pattern of eighth notes and rests.

180

Handwritten musical score for measures 180-183. The score is written on three staves. The top two staves are a grand staff (treble and bass clef), and the bottom staff is a single bass clef staff. The music is in 3/8 time and features a simple rhythmic pattern of eighth notes and rests.

184

Handwritten musical score for measures 184-187. The score is written on three staves. The top two staves are a grand staff (treble and bass clef), and the bottom staff is a single bass clef staff. The music is in 3/8 time and features a simple rhythmic pattern of eighth notes and rests.

188

Handwritten musical score for measures 188-191. It consists of three staves: two grand staves (treble and bass clef) and one bass staff. The key signature has one flat (B-flat). The music features a sequence of chords and eighth notes across four measures.

192

Handwritten musical score for measures 192-195. It consists of three staves: two grand staves (treble and bass clef) and one bass staff. The key signature has one flat (B-flat). The music continues with chords and eighth notes across four measures.

196

Handwritten musical score for measures 196-199. It consists of three staves: two grand staves (treble and bass clef) and one bass staff. The key signature has one flat (B-flat). The music continues with chords and eighth notes across four measures.

200

Handwritten musical score for measures 200-203. The score is written on three staves: two grand staves (treble and bass clef) and one bass staff. The music is in 3/8 time and B-flat major. The melody alternates between the two grand staves. Measure 200: Treble clef has a quarter rest, bass clef has a quarter note B-flat. Measure 201: Treble clef has a quarter note D, bass clef has a quarter note B-flat. Measure 202: Treble clef has a quarter note E, bass clef has a quarter note D. Measure 203: Treble clef has a quarter note F, bass clef has a quarter note E.

204

Handwritten musical score for measures 204-207. The score is written on three staves: two grand staves (treble and bass clef) and one bass staff. The music is in 3/8 time and B-flat major. The melody alternates between the two grand staves. Measure 204: Treble clef has a quarter note G, bass clef has a quarter note F. Measure 205: Treble clef has a quarter note A, bass clef has a quarter note G. Measure 206: Treble clef has a quarter note B-flat, bass clef has a quarter note A. Measure 207: Treble clef has a quarter note C, bass clef has a quarter note B-flat.

208

Handwritten musical score for measures 208-211. The score is written on three staves: two grand staves (treble and bass clef) and one bass staff. The music is in 3/8 time and B-flat major. The melody alternates between the two grand staves. Measure 208: Treble clef has a quarter note D, bass clef has a quarter note C. Measure 209: Treble clef has a quarter note E, bass clef has a quarter note D. Measure 210: Treble clef has a quarter note F, bass clef has a quarter note E. Measure 211: Treble clef has a quarter note G, bass clef has a quarter note F.



212

Handwritten musical score for measures 212-215. The score is written on three staves: two grand staves (treble and bass clefs) and one bass staff (bass clef). The key signature is one flat (Bb) and the time signature is 6/8. The music consists of quarter notes and rests, with some notes beamed together. The first two staves are grouped by a brace on the left.

216

Handwritten musical score for measures 216-219. The score is written on three staves: two grand staves (treble and bass clefs) and one bass staff (bass clef). The key signature is one flat (Bb) and the time signature is 6/8. The music consists of quarter notes and rests, with some notes beamed together. The first two staves are grouped by a brace on the left.

220

Handwritten musical score for measures 220-223. The score is written on three staves: two grand staves (treble and bass clefs) and one bass staff (bass clef). The key signature is one flat (Bb) and the time signature is 6/8. The music consists of quarter notes and rests, with some notes beamed together. The first two staves are grouped by a brace on the left.

224

Handwritten musical score for measures 224-227. It consists of three staves: two grand staves (treble and bass clef) and one bass staff. The music is in 6/8 time with a key signature of one flat. Measure 224 has a key signature change to two flats. The notation includes eighth and quarter notes with stems, and rests.

228

Handwritten musical score for measures 228-231. It consists of three staves: two grand staves (treble and bass clef) and one bass staff. The music is in 6/8 time with a key signature of one flat. The notation includes eighth and quarter notes with stems, and rests.

232

Handwritten musical score for measures 232-235. It consists of three staves: two grand staves (treble and bass clef) and one bass staff. The music is in 6/8 time with a key signature of one flat. Measure 232 has a key signature change to two flats. The notation includes eighth and quarter notes with stems, and rests.

236

Handwritten musical score for measures 236-239. The score is written on three staves: two treble clefs and one bass clef. The key signature has one flat (B-flat). The music features a simple harmonic accompaniment with quarter and eighth notes, and rests. A fermata is placed over the final note of the second staff in measure 239.

240

Handwritten musical score for measures 240-243. The score is written on three staves: two treble clefs and one bass clef. The key signature has one flat (B-flat). The music features a simple harmonic accompaniment with quarter and eighth notes, and rests.

244

Handwritten musical score for measures 244-247. The score is written on three staves: two treble clefs and one bass clef. The key signature has one flat (B-flat). The music features a simple harmonic accompaniment with quarter and eighth notes, and rests. A fermata is placed over the final note of the second staff in measure 247.

248

Handwritten musical notation for measures 248-251. It consists of three staves: two grand staves (treble and bass clef) and one bass staff. The music is in 6/8 time and features a rhythmic pattern of eighth and sixteenth notes with rests.

252

Handwritten musical notation for measures 252-255. It consists of three staves: two grand staves (treble and bass clef) and one bass staff. The music continues with the same rhythmic pattern as the previous section.

256

Handwritten musical notation for measures 256-259. It consists of three staves: two grand staves (treble and bass clef) and one bass staff. The music continues with the same rhythmic pattern as the previous sections.

260

Handwritten musical notation for measures 260-263. The notation is arranged in three staves. The top two staves are grand staves (treble and bass clef), and the bottom staff is a bass staff. The music is in 6/8 time and features a simple rhythmic pattern of quarter notes and rests.

264

Handwritten musical notation for measures 264-267. The notation is arranged in three staves. The top two staves are grand staves (treble and bass clef), and the bottom staff is a bass staff. A key signature change to one flat is indicated at the start of measure 264. The music continues with the same rhythmic pattern.

268

Handwritten musical notation for measures 268-271. The notation is arranged in three staves. The top two staves are grand staves (treble and bass clef), and the bottom staff is a bass staff. A key signature change to two flats is indicated at the start of measure 268. The music continues with the same rhythmic pattern.

272

Handwritten musical score for measures 272-275. The score is written on three staves. The top two staves are grouped by a brace on the left. The bottom staff is a single line. The music is in 3/4 time and features a simple harmonic accompaniment with quarter and eighth notes.

276

Handwritten musical score for measures 276-279. The score is written on three staves. The top two staves are grouped by a brace on the left. The bottom staff is a single line. The music is in 3/4 time and features a simple harmonic accompaniment with quarter and eighth notes.

280

Handwritten musical score for measures 280-283. The score is written on three staves. The top two staves are grouped by a brace on the left. The bottom staff is a single line. The music is in 3/4 time and features a simple harmonic accompaniment with quarter and eighth notes.

284

Handwritten musical score for measures 284-287. It consists of three staves: two grand staves (treble and bass clef) and one bass staff. The music is in 3/4 time with a key signature of one flat. The notation includes quarter notes, eighth notes, and rests. A 'ff' dynamic marking is present above the first staff in the fourth measure.

288

Handwritten musical score for measures 288-291. It consists of three staves: two grand staves (treble and bass clef) and one bass staff. The music is in 3/4 time with a key signature of one flat. The notation includes quarter notes, eighth notes, and rests.

292

Handwritten musical score for measures 292-295. It consists of three staves: two grand staves (treble and bass clef) and one bass staff. The music is in 3/4 time with a key signature of one flat. The notation includes quarter notes, eighth notes, and rests. A 'ff' dynamic marking is present above the first staff in the first measure.

296

Handwritten musical score for measures 296-299. The score is written on three staves: two grand staves (treble and bass clef) and one bass staff. The music is in 6/8 time and features a sequence of chords and eighth notes. A *ff* dynamic marking is present above the first staff in the second measure.

300

Handwritten musical score for measures 300-303. The score is written on three staves: two grand staves (treble and bass clef) and one bass staff. The music continues with chords and eighth notes. A *ff* dynamic marking is present above the first staff in the third measure.

304

Handwritten musical score for measures 304-307. The score is written on three staves: two grand staves (treble and bass clef) and one bass staff. The music continues with chords and eighth notes. A *ff* dynamic marking is present above the first staff in the fourth measure.



308

Handwritten musical score for measures 308-311. The score is written on three staves. The top two staves are a grand staff (treble and bass clefs), and the bottom staff is a separate bass clef staff. The music is in 3/8 time and features a sequence of chords and eighth notes.

312

Handwritten musical score for measures 312-315. The score is written on three staves. The top two staves are a grand staff (treble and bass clefs), and the bottom staff is a separate bass clef staff. The music is in 3/8 time and features a sequence of chords and eighth notes.

316

Handwritten musical score for measures 316-319. The score is written on three staves. The top two staves are a grand staff (treble and bass clefs), and the bottom staff is a separate bass clef staff. The music is in 3/8 time and features a sequence of chords and eighth notes.

320

Handwritten musical score for measures 320-323. The score is written on three staves: two treble clefs and one bass clef. The music is in 4/4 time. The first measure starts with a treble clef and a key signature of one flat. The second measure has a key signature change to one flat. The music consists of chords and eighth notes.

324

Handwritten musical score for measures 324-327. The score is written on three staves: two treble clefs and one bass clef. The music is in 4/4 time. The first measure starts with a treble clef and a key signature of one flat. The second measure has a key signature change to one flat. The music consists of chords and eighth notes.

328

Handwritten musical score for measures 328-331. The score is written on three staves: two treble clefs and one bass clef. The music is in 4/4 time. The first measure starts with a treble clef and a key signature of one flat. The second measure has a key signature change to one flat. The music consists of chords and eighth notes.

332

336

340

344

348

352

356

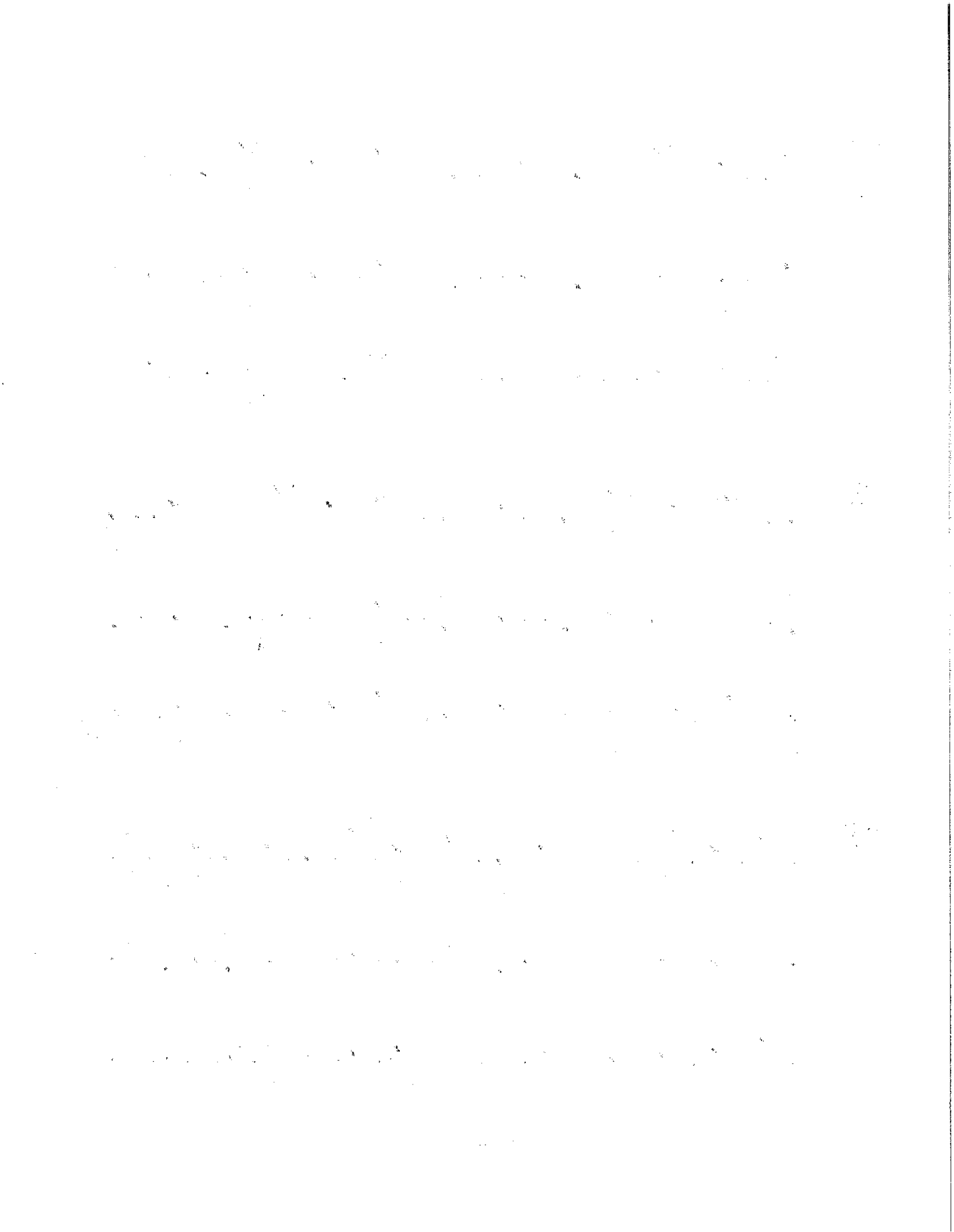
Handwritten musical score for measures 356-359. The score is written on three staves: a grand staff (treble and bass clefs) and a separate bass clef staff. The music is in 6/8 time and features a melodic line in the treble clef and a bass line in the bass clef. A key signature change to one flat is indicated above the first staff at measure 357. The notation includes eighth and sixteenth notes with stems, and rests.

360

Handwritten musical score for measures 360-363. The score is written on three staves: a grand staff (treble and bass clefs) and a separate bass clef staff. The music is in 6/8 time and features a melodic line in the treble clef and a bass line in the bass clef. A key signature change to one flat is indicated above the first staff at measure 361. The notation includes eighth and sixteenth notes with stems, and rests.

364

Handwritten musical score for measures 364-367. The score is written on three staves: a grand staff (treble and bass clefs) and a separate bass clef staff. The music is in 6/8 time and features a melodic line in the treble clef and a bass line in the bass clef. A key signature change to one flat is indicated above the first staff at measure 365. The notation includes eighth and sixteenth notes with stems, and rests.



380

383

January 2018  
Marietta GA